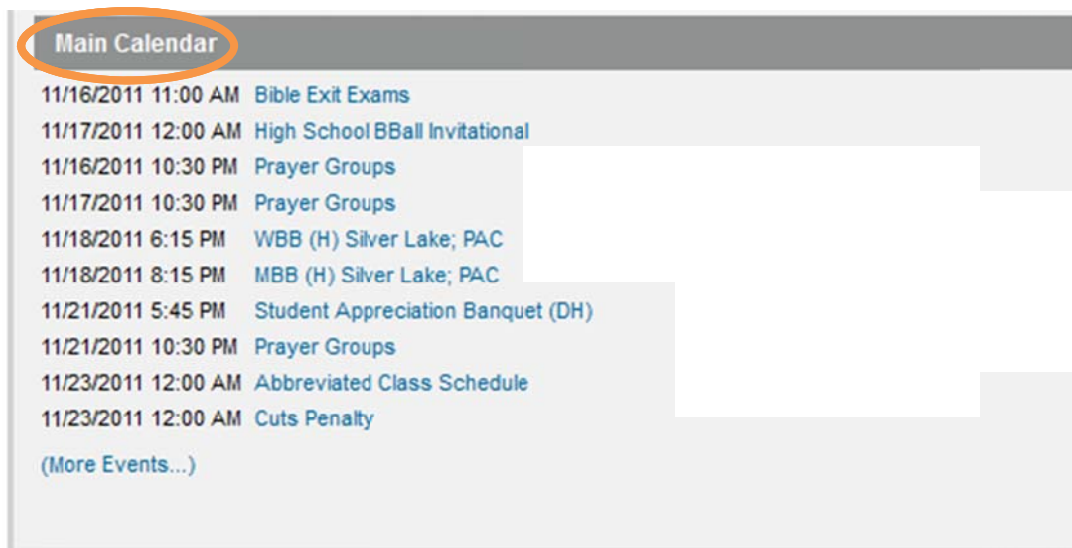




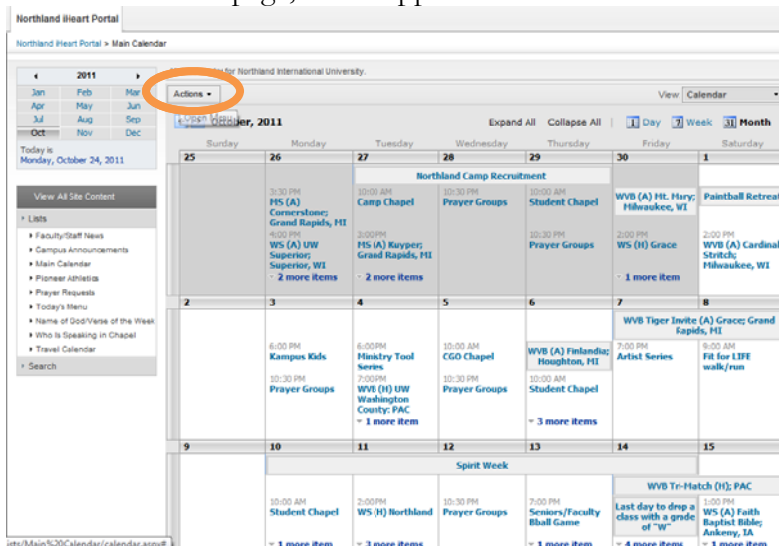
iHeart Calendar

The student activities calendar is now available on iHeart. Below are directions on how to access it and how to sync it with your Outlook so you can keep up-to-date on all the activities on campus.

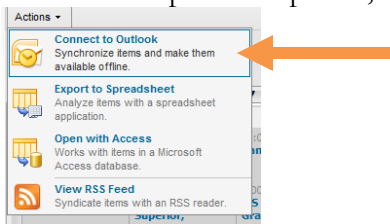
1. Go to <https://iheart.ni.edu/Pages/WelcomePage.aspx> in **Internet Explorer** (it will not sync properly through any other browser)
2. At the bottom of the page, click on **Main Calendar**.



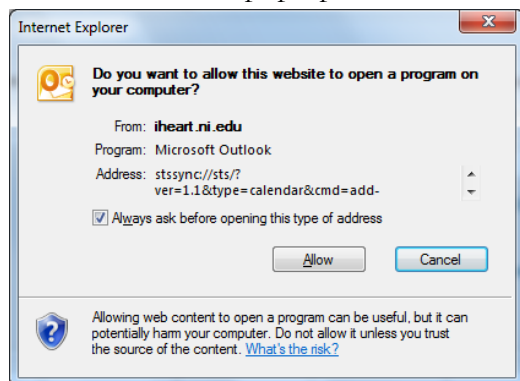
3. On the **Calendar** page, in the upper left corner of the calendar, click on the **Actions** button.



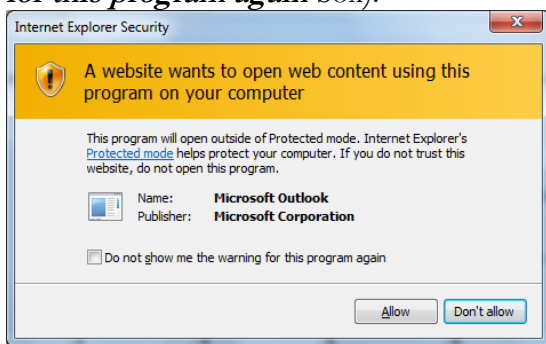
4. From the drop-down options, click **Connect to Outlook**



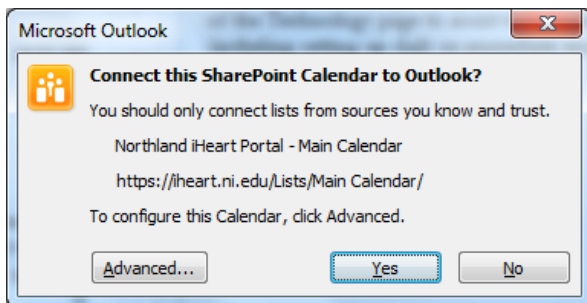
5. Click **Allow** on the pop-up:



6. You may get another pop-up. Click **Allow** again (you can also check the **Do not show me the warning for this program again** box).



7. It will then take you to your Outlook, with another pop-up. Click **Yes**.



8. It will take you to your calendars section, where you will need to enter your Northland credentials; it should then add all the activities on the calendar to this new calendar in your Outlook.